

Release - Aug 2023 (Viewer Update with New Markups)

07/17/2024 1:46 pm EDT

DocBoss has updated the document viewer to include updated navigation options, more flexibility, and extended markup options. See below for a detailed description of the new features.

New Viewer functions

Viewer navigation

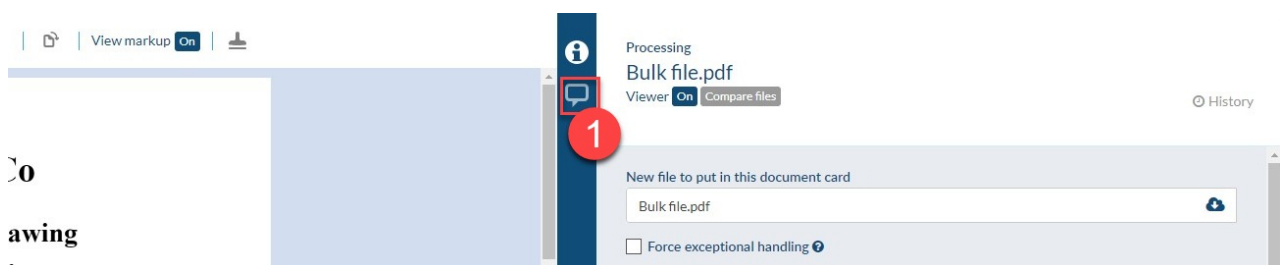
- Scroll (vertical) via mouse scroll
- Zoom via **CTRL+mouse scroll** (or use drop-down on top)
- Pan via **SHIFT+mouse scroll** (horizontal scroll)
- **CTRL+0** to return to 100% zoom
- Grab tool allows user to move file in viewer.
- Full screen available by hiding the side panel, or **CTRL+M**

New markups

- New markups include **Text**, **TextBox** and **Callout**.
 - Note we have indicated they are in BETA. Please review files created for submittal prior to sending to your customer.
- Change properties of the annotations one placed on screen (line width/color, text size/color)
- Move/resize annotations
- Colleagues can add feedback. This will be added as **Reply** text in pdf outputs. The feedback is a single text box.

Working with side panel (display info or markup tab)

1. Click the markup icon in the side panel margin.



2. To hide/show full screen, click the arrow, or type **CTRL+M**.

3. Change width of side panel.



Document Info

Linked Equipment Sub-Suppliers

Document Sub-Supplier Override

- Select Sub-Supplier -

Document Title

Instrument Data Sheet

Document Codes

Primary code

D16

Tags

Tag(s) List

41LS-60505

Pages in Document

Cancel Save

Annotation 1: A red box highlights a right-pointing arrow icon in the left sidebar.

Annotation 2: A red circle with the number 2 is placed over the right-pointing arrow icon.

Annotation 3: A red arrow points from a red circle with the number 3 to the right-pointing arrow icon.

Adding markups

Here is a walkthrough of adding markups in the new viewer. Each step is detailed below.

Page 1 / 5 | 150% | View markup On

Here is a box

ValveCo

Certified Drawing

Order Number: Order123
Model: GV1234

why smoke?

Annotations: 1 (Markup tool icon), 2 (Callout line), 3 (Text box), 4 (Feedback box), 5 (View markup button), 6 (Zoom arrows), 7 (Markup card), 8 (Markup tool icon).

1. Click the required markup tool (callout in this case).

beta

Show beta tools

Page 1

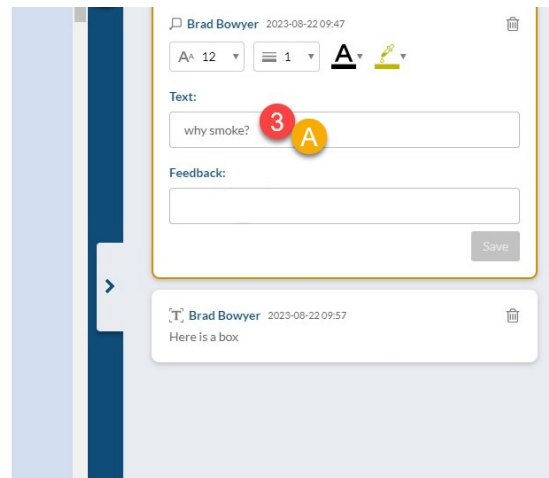
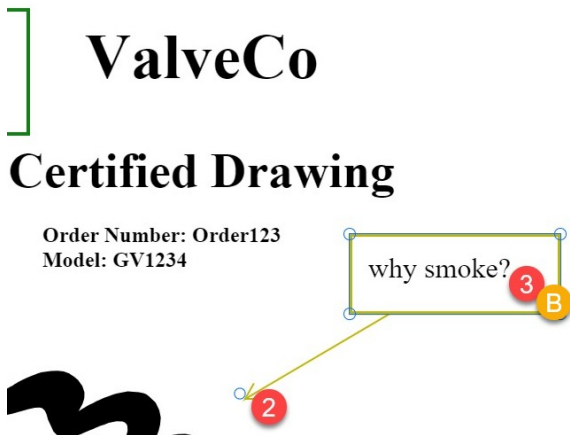
Brad Bowyer 2023-08-22 09:47

A^x 12 | 1 | A | [Markup tool icon]

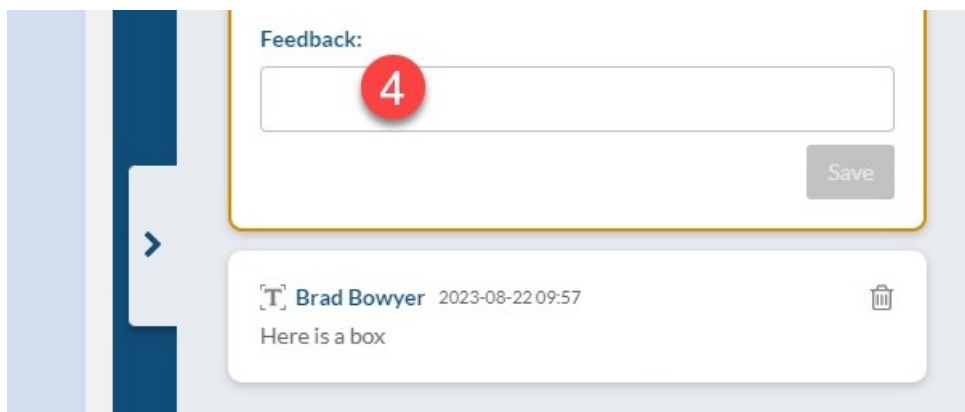
Annotation 1: A red circle with the number 1 highlights the callout markup tool icon.

2. Click start point for drawing the annotation.

3. Enter text into callout box (3A). After leaving the annotation (click anywhere on file), the markup reference box appears in the side panel with the same text (3B).



4. If desired, any user can add feedback. This will be displayed alongside the annotation in the final PDF output, and also available internally when looking at the file.



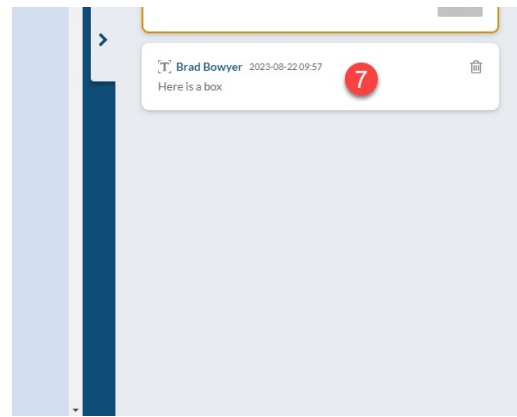
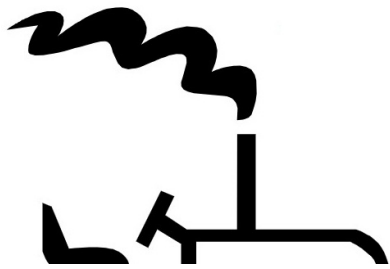
5. To zoom, users can use **CTRL+mouse scroll** or change zoom level at top. **CTRL+0** resets to 100%.



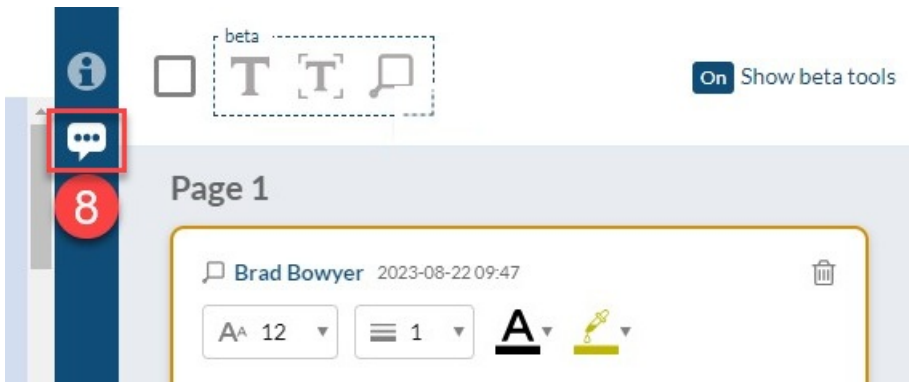
6. Pan horizontally using scroll bar, **SHIFT+mouse scroll**, or grab tool.

7. Other markup is shown in reduced view while the current one is being edited.

Order Number: Order123
Model: GV1234



8. The markup panel icon with dots indicated the panel includes some markup.



History screen update

All comments and markup information is displayed below the view in the history screen (below the file). Note that when clicking **Compare** on the assign/viewer screen, we will now open a history view screen to show the appropriate data. It is now also possible to view comment files also (if pdf).

Terms:

Annotation: The vector graphic drawn on the file.

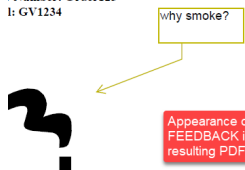
Markup: The annotation plus with associated text and feedback.

Feedback: Text added by users (inside a markup) which will appear as a reply in PDF output. It will be linked to the markup. This may be useful replying to customer annotations when uploaded to DocBoss.

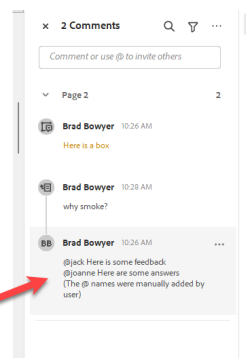
ValveCo

tified Drawing

Number: Order123
Model: GV1234



Appearance of FEEDBACK in resulting PDF



Comment: Reserved for text added at the *card* level. This text is entered on the **Info** tab. Comments can also be

uploaded as a file. Markup is the term for annotations and text applied directly into the file.
